



# Inner Forth Futures & Climate FORTH project



*A landscape led approach to a just transition in Central Scotland*



[www.innerforthlandscape.co.uk](http://www.innerforthlandscape.co.uk)

[@innerforth](https://twitter.com/innerforth)





# Inner Forth Landscape Initiative, the precursor to Inner Forth Futures

## Conserving and Restoring

- ✓ Habitat Stepping Stones
- ✓ Historic & Designed Landscapes
- ✓ Safeguarding Historic Features
- ✓ Inner Forth Wetland Network
- ✓ Woodland & Wildlife Corridors

## Exploring and Learning

- ✓ A Learning Landscape
- ✓ Improving Access

## Skills and Training

- ✓ Developing Our Skills

## Recording and Celebrating

- ✓ Conservation Volunteering
- ✓ Back & Forth

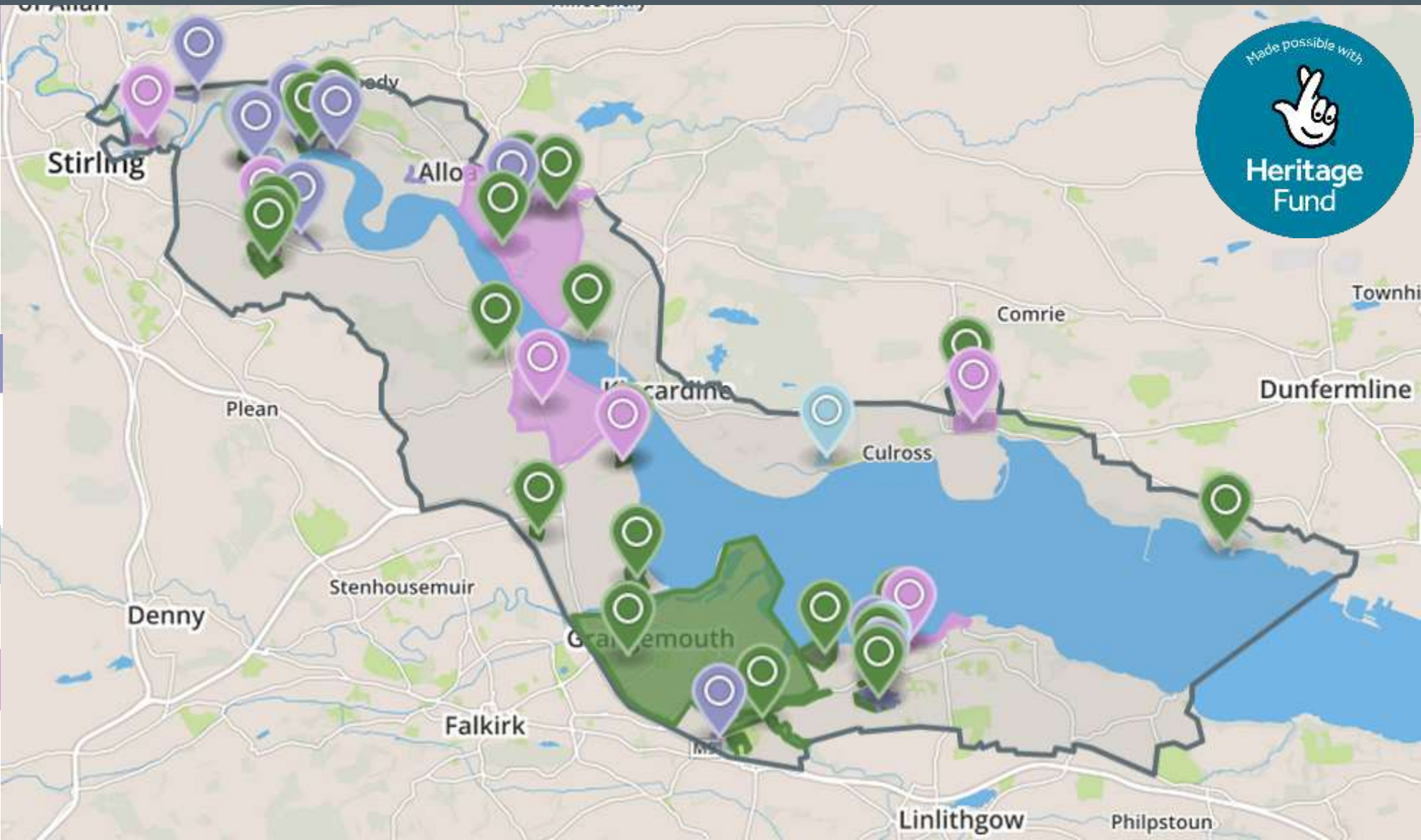






Photo: David Palmer







# Climate FORTH: Furthering Our Resilience Through Heritage

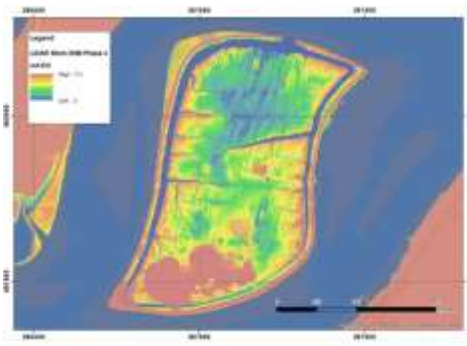


That heritage can be the asset on which to build a sustainable, healthy, green recovery for the Inner Forth.

To find new ways to help this **place adapt to change**; for affected communities to **increase their resilience** and **realise new benefits**; and for beneficiaries to **invest in heritage as an asset**. We will ensure that adapting to change is part of a just transition.

Climate FORTH will **demonstrate in targeted locations** (pilots), the **transformative action** needed to transition to a climate literate, ready and resilient place and will **inspire others to act**.

Outcomes	Objectives	Audiences
<p>A. The Inner Forth's heritage is valued and has inspired action to meet Scotland's net zero climate targets and made positive economic and societal change.</p> <p>B. The Inner Forth's natural and built heritage assets have an increased resilience to societal and climatic change.</p> <p>C. People and places within the Inner Forth have an increased resilience to change, as a result of heritage supporting the economy, healthy lifestyles, sustainable choices and a just transition.</p>	<ol style="list-style-type: none"> <li>1. Support the resilience of communities to climate and other change.</li> <li>2. Demonstrate innovative approaches to managing heritage assets that address the need for climate change adaptation and mitigation.</li> <li>3. Support economic resilience with new, sustainable and interconnected uses of heritage assets.</li> </ol>	<ol style="list-style-type: none"> <li>1. Our disadvantaged communities (The lowest 20% of the SIMD datazones that are located within our project area)</li> <li>2. Young People (aged approx. 14- 26)</li> <li>3. Local Businesses &amp; social/community enterprises</li> <li>4. Wider local communities and service users.</li> </ol> <p><i>We will seek to address barriers to involvement with heritage.</i></p> <p><i>We will seek to co-deliver wider benefits for the landscape and its people through use of the Place Principle and community wealth building approach.</i></p>





# Climate FORTH: Furthering Our Resilience Through Heritage



Inner Forth Futures Partnership →



06/11/2024, 13:18:03  
 IFF Climate FORTH Core Area  
 IFF Climate FORTH Wider Area

← Activities throughout the Inner Forth (Clackmannanshire, Falkirk, Fife, Stirling)  
Working with a 215 km<sup>2</sup> landscape

→ Three-year project – delivery phase to summer 2026





# Climate Resilience



The ability to anticipate, prepare for and respond to hazardous events, trends or disturbances related to the climate.

- Climate FORTH – pilot schemes
- Supporting most at-risk communities
- Just Transition
- Helping to meet Scotland's net zero targets





# Communities and Young People



## Local Resilience Plans

- Help 4 communities shape **Local Resilience Plans** – Hawkhill (Alloa), Bainsford & Langlees (Falkirk), Fallin (Stirling) and Kincardine (Fife)
- Interactive series of workshops – heritage / climate change / resilient and fair future
- Lead to delivery of plan and budget to better **protect** and **enhance** locally important heritage assets
- **Empower communities** – local decision and plan-making process





# Natural / Built Heritage Resilience





## Inner Forth Bike Bus

- Pilot a free seasonal service
- Allow easier method to explore **lesser-known heritage sites**
- Visitors / locals
- Cyclists / walkers
- 21<sup>st</sup> April – end of October!



# Tourism / Businesses

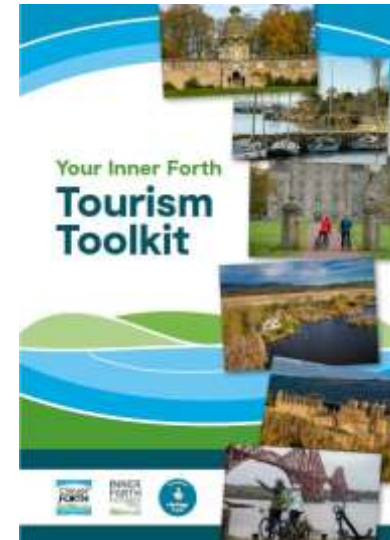
## Revitalising the *Round the Inner Forth* cycle route

- Rebranding – follows the shores of the Inner Forth
- Promote **car-free** heritage tourism



## Tourism Toolkit and Business Training

- Online toolkit to support **hospitality** and **businesses**
- Encourage **sustainable heritage tourism** in Inner Forth
- Copyright-free promotional resources provided





# ROUND THE INNER FORTH CYCLE ROUTE

A big thank you to our funders:



*Thanks to National Lottery players*



**Funded by  
UK Government**

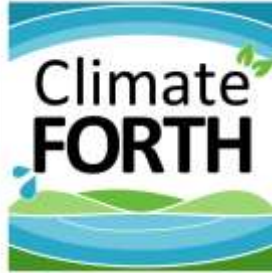
And big thanks to our partners:



Climate FORTH Team

[innerforth@rspb.org.uk](mailto:innerforth@rspb.org.uk)

01324 831 568



James Stead, Climate FORTH Project Manager

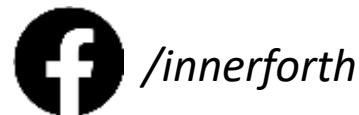
[James.stead@rspb.org.uk](mailto:James.stead@rspb.org.uk)

Kate Fuller, GAT Senior Programme Manager (& Steering Group member)

[Kate.fuller@greenactiontrust.org](mailto:Kate.fuller@greenactiontrust.org)

[www.innerforthlandscape.co.uk/climate-forth](http://www.innerforthlandscape.co.uk/climate-forth)

[info@innerforthlandscape.co.uk](mailto:info@innerforthlandscape.co.uk)



*Several images, courtesy of RSPB and This Way Up Media*